

Mayfair Shopping Center

10-2020 JERICHO TURNPIKE | COMMACK, NY 11725



2.2M visits annually
+19% YoY increase
6.63 visit frequency
49 min avg. duration

*Property Data by Placer.ai



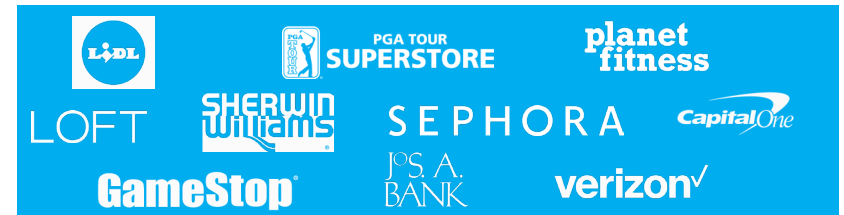
Available Spaces

- 2,430 SF; 2,971 SF
- 6,762 SF - portion of space 28 (Lease pending)
- 12,800 SF - former Rite Aid
- 21,000 SF - portion of space 15 (remaining space leased to PGA TOUR Superstore)

Property Highlights

- 221,651 SF retail center with 2.2 million annual visits*
- Anchored by top-ranked grocer Lidl and PGA TOUR Superstore.
- Leasing and improving the store lineup has resulted in the center's monthly traffic to increase by +19% YoY
- More retailers added: Sephora (recently opened), Champions Martial Arts (recently opened) and Mimi's Coffee & Bubble Tea coming soon!
- A successful tenant mix of national retailers and restaurants.
- Located in upscale Suffolk county; typical visitor income of \$200K*.
- Situated on Jericho Turnpike, proximate to Sunken Meadow State Parkway.

Retailers

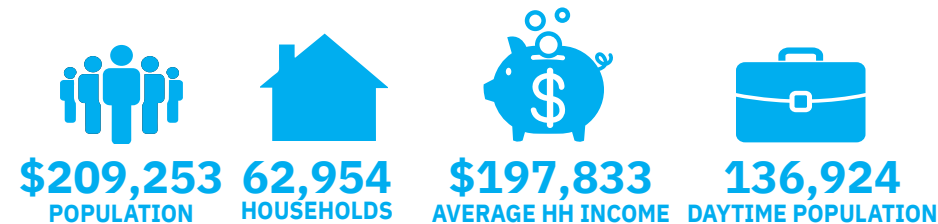


Average Daily Traffic

- 38,223** Jericho Turnpike*
- 29,195** Sunken Meadow State Parkway*
- 33,690** Commack Road, CR 4*

Demographics

5-mile radius



Source: sitesusa.com

Mayfair Shopping Center

10-2020 JERICHO TURNPIKE | COMMACK, NY 11725

LEVIN
MANAGEMENT

PHOTO GALLERY



**PGA Tour Superstore,
Champions Martial Arts and
Sephora are now open!**

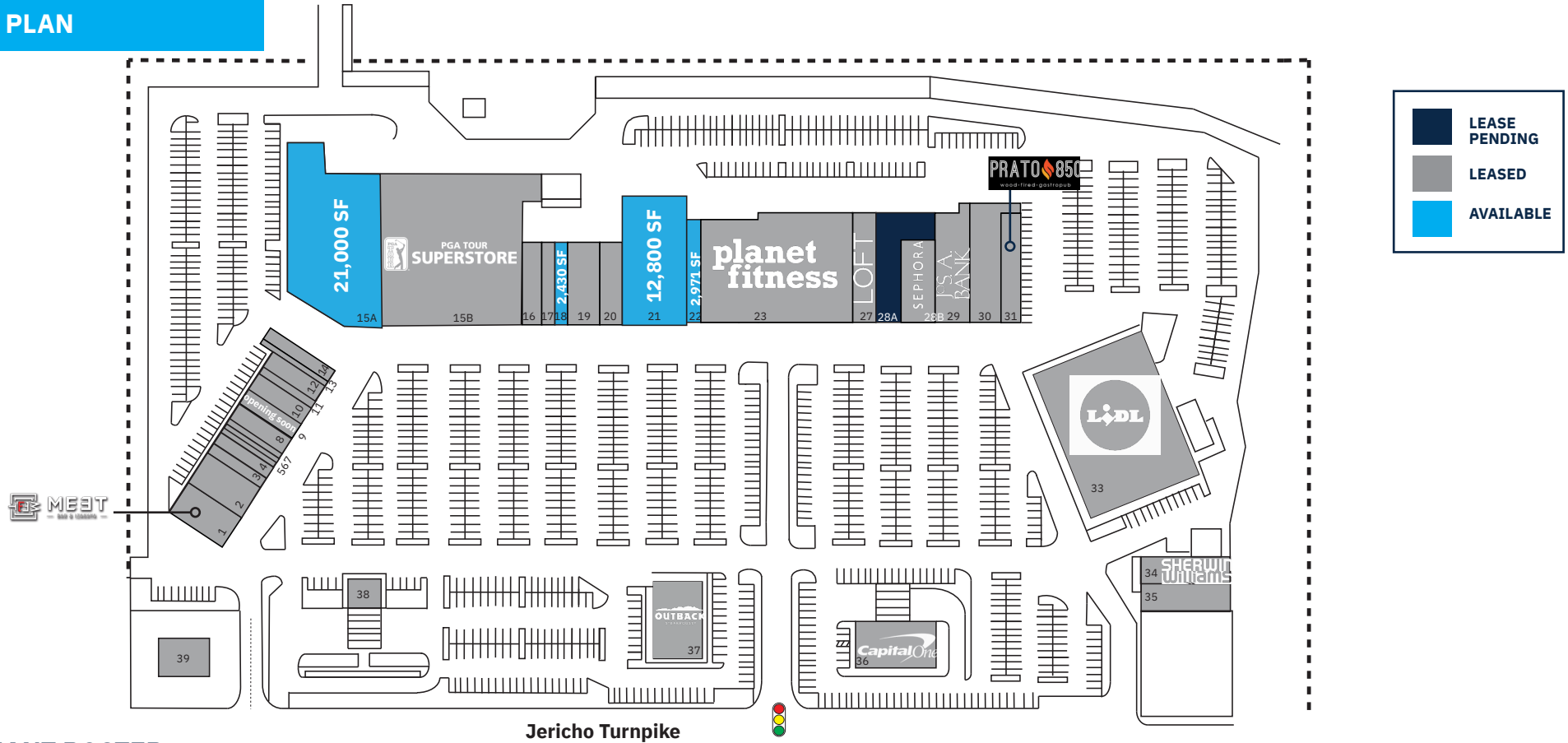
**Mimi's Coffee & Bubble Tea
coming soon!**



Mayfair Shopping Center

10-2020 JERICHO TURNPIKE | COMMACK, NY 11725

SITE PLAN



TENANT ROSTER

1	Meet Izakaya Ramen Bar	3,749 SF	10	Mr. Cheapo's	1,360 SF	18	Available	2,430 SF	29	Jos. A. Bank	5,064 SF
2	Bagel Toasterie	3,320 SF	11	H&R Block	800 SF	19	Harry Charles Salon & Spa	3,480 SF	30	JBBQ & Shabu Shabu	6,507 SF
3	Champions Martial Arts	1,320 SF	12	The Crushed Olive	1,280 SF	20	Music & Arts	2,500 SF	31	Prato 850	3,380 SF
4	Tropical Smoothie	1,280 SF	13	Barber	960 SF	21	Available (former Rite Aid)	12,800 SF	33	Lidl	30,808 SF
5	Queen Bee Nail Salon	800 SF	14	Gamestop	2,000 SF	22	Available	2,971 SF	34	Sherwin Williams	4,975 SF
6	Excel Shoe Repair	500 SF	15A	Available	21,000 SF	23	Planet Fitness	19,865 SF	35	Mayfair Liquors	3,894 SF
7	Cleaners	890 SF	15B	PGA Tour Superstore	39,225 SF	27	Loft	5,700 SF	36	Capital One	5,500 SF
8	D'Ore Jewelers	1,200 SF	16	Northwell Go Health	2,500 SF	28A	Lease Pending	6,762 SF	37	Outback Steakhouse	6,192 SF
9	Mimi's Coffee & Bubble Tea <i>Opening Soon!</i>	1,200 SF	17	Original Brooklyn Pizza	1,400 SF	28B	Sephora	4,786 SF	38	M&T Bank	6,000 SF
									39	Verizon Wireless	2,500 SF

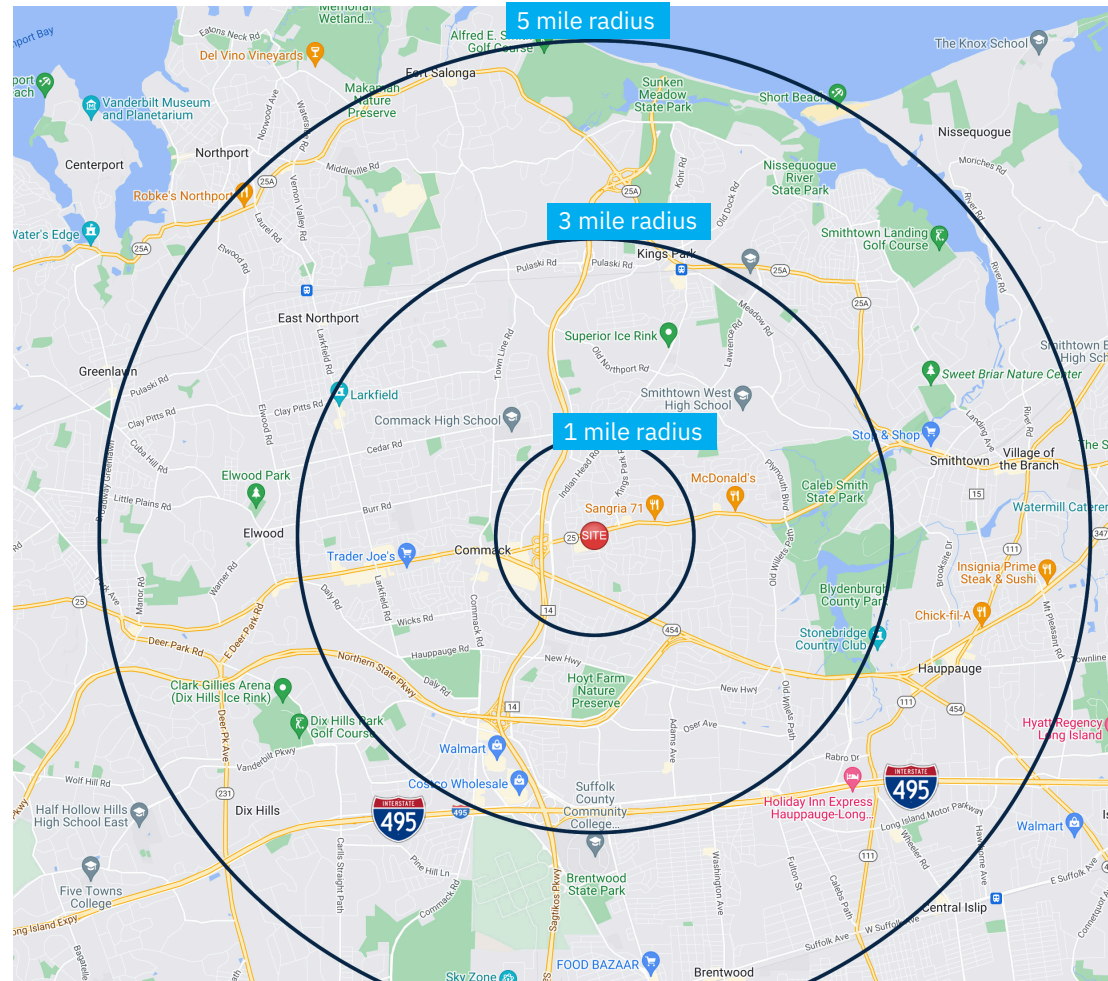
Mayfair Shopping Center

10-2020 JERICHO TURNPIKE | COMMACK, NY 11725

DEMOGRAPHICS

2010-2020 Census, 2024 Estimates	1 mile radius	3 mile radius	5 mile radius
Population	11,170	69,925	197,833
Households	3,745	23,138	62,954
Average Household Income	\$199,263	\$215,556	\$209,253
Projected Average Household Income (2028)	\$213,062	\$233,451	\$231,132
Median Household Income	\$173,607	\$168,095	\$163,254
Total Businesses	567	4,332	9,947
Total Employees	5,158	58,379	115,356
Daytime Population	6,257	66,740	136,924
Total Annual Household Expenditure	\$443.22 M	\$2.94 B	\$7.8 B
HH Income \$200K or more	1,502	8,854	22,620
College Degree + (Bachelor Degree or Higher)	4,404	27,213	65,825

Source: sitesusa.com



Mayfair Shopping Center

10-2020 JERICHO TURNPIKE | COMMACK, NY 11725

CLOSE-UP AERIAL



Mimi's Coffee & Bubble Tea & Champions Martial Arts



1,360 SF Available

21,000 SF Available



2,430 SF Available

12,800 SF Available



2,971 SF Available

LOFT

SEPHORA



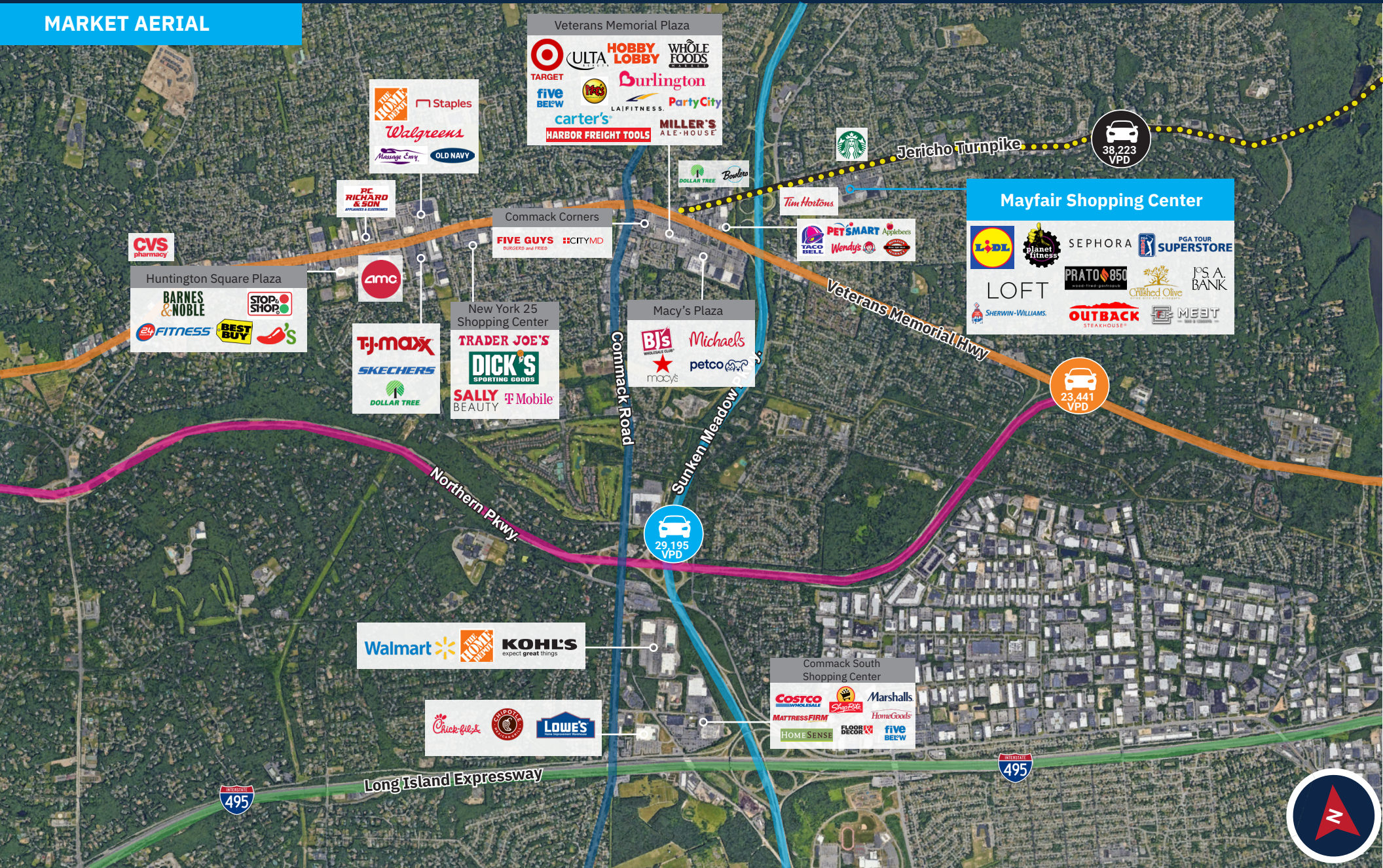
JERICHO TURNPIKE - 38,223 ADV



Mayfair Shopping Center

10-2020 JERICHO TURNPIKE | COMMACK, NY 11725

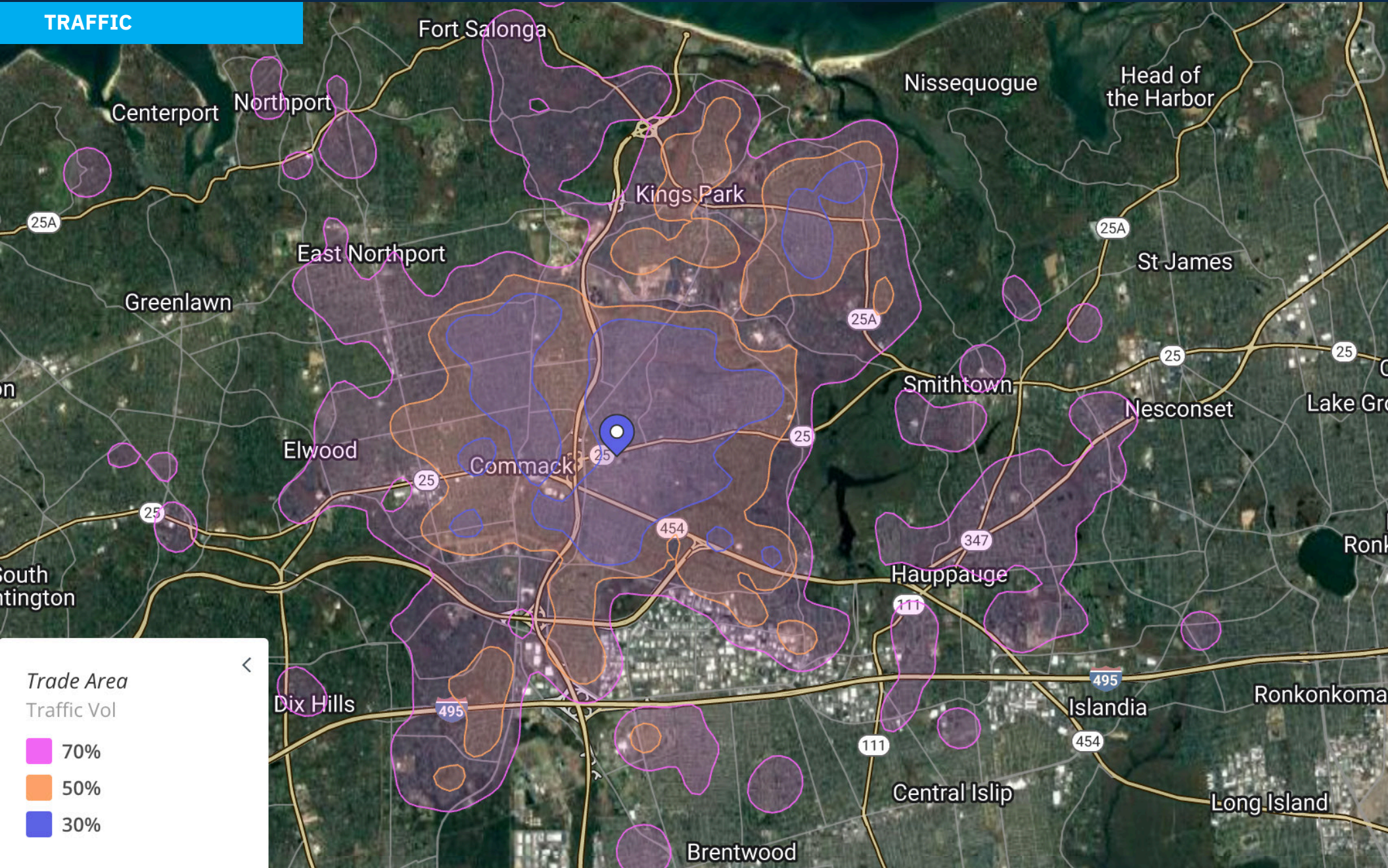
MARKET AERIAL



Mayfair Shopping Center

10-2020 JERICHO TURNPIKE | COMMACK, NY 11725

TRAFFIC



CONTACT EXCLUSIVE AGENT

E.J. MOAWAD

Senior Leasing Representative

t. 908.226.5266 m. 201.705.3721

emoawad@levinmgt.com



Main Office

975 US Highway 22

North Plainfield, NJ 07060

800.488.0768

levinmgt.com | 70 YEARS