

Mayfair Shopping Center

10-2020 JERICHO TURNPIKE | COMMACK, NY 11725

LEVIN
MANAGEMENT



2.1M visits annually
+19+% YoY increase
5.73 visit frequency
70 min avg. duration

*Property Data by Placer.ai



Available Spaces

1,360 SF; 2,430 SF; 2,971 SF
6,762 SF - portion of space 28 (Lease pending)
12,800 SF - former Rite Aid
21,000 SF - portion of space 15 (remaining space leased to PGA TOUR Superstore)

Property Highlights

- 221,612 SF retail center with 2.1 million annual visits*.
- Anchored by top-ranked grocer Lidl and PGA TOUR Superstore.
- Leasing and improving the store lineup has resulted in the center's monthly traffic to increase by 19+% YoY
- More retailers added: Sephora (recently opened), Champions Martial Arts (recently opened) and Mimi's Coffee & Bubble Tea coming soon!
- A successful tenant mix of national retailers and restaurants.
- Located in upscale Suffolk county; typical visitor income of \$200K*.
- Situated on Jericho Turnpike, proximate to Sunken Meadow State Parkway.

Retailers



Average Daily Traffic

38,223 Jericho Turnpike*
29,195 Sunken Meadow State Parkway*
33,690 Commack Road, CR 4*

Demographics

5-mile radius



202,137
POPULATION



63,205
HOUSEHOLDS



\$170,000
AVERAGE HH INCOME



128,083
DAYTIME POPULATION

Source: sitesusa.com

Mayfair Shopping Center

10-2020 JERICHO TURNPIKE | COMMACK, NY 11725

LEVIN
MANAGEMENT

PHOTO GALLERY



**PGA Tour Superstore,
Champions Martial Arts and
Sephora are now open!**

**Mimi's Coffee & Bubble Tea
coming soon!**

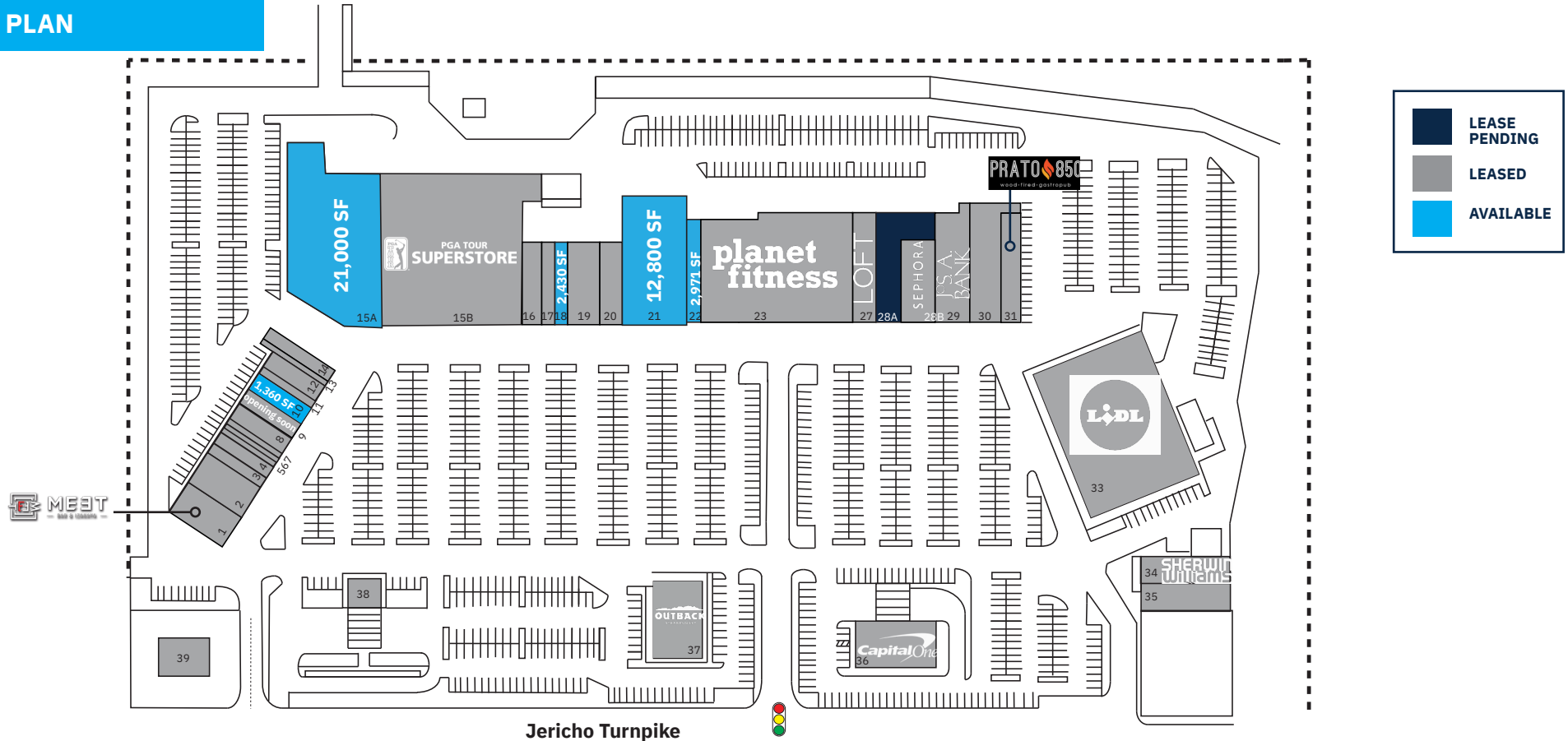


Mayfair Shopping Center

10-2020 JERICHO TURNPIKE | COMMACK, NY 11725

LEVIN
MANAGEMENT

SITE PLAN



TENANT ROSTER

1	Meet Izakaya Ramen Bar	3,749 SF	10	Available	1,360 SF	18	Available	2,430 SF	29	Jos. A. Bank	5,064 SF
2	Bagel Toasterie	3,320 SF	11	H&R Block	800 SF	19	Harry Charles Salon & Spa	3,480 SF	30	JBBQ & Shabu Shabu	6,507 SF
3	Champions Martial Arts	1,320 SF	12	The Crushed Olive	1,280 SF	20	Music & Arts	2,500 SF	31	Prato 850	3,380 SF
4	Tropical Smoothie	1,280 SF	13	Barber	960 SF	21	Available (former Rite Aid)	12,800 SF	33	Lidl	30,808 SF
5	Queen Bee Nail Salon	800 SF	14	Gamestop	2,000 SF	22	Available	2,971 SF	34	Sherwin Williams	4,975 SF
6	Excel Shoe Repair	500 SF	15A	Available	21,000 SF	23	Planet Fitness	19,865 SF	35	Mayfair Liquors	3,894 SF
7	Cleaners	890 SF	15B	PGA Tour Superstore	39,225 SF	27	Loft	5,700 SF	36	Capital One	5,500 SF
8	D'Ore Jewelers	1,200 SF	16	Northwell Go Health	2,500 SF	28A	Available	6,762 SF	37	Outback Steakhouse	6,192 SF
9	Mimi's Coffee & Bubble Tea <i>Opening Soon!</i>	1,200 SF	17	Original Brooklyn Pizza	1,400 SF	28B	Lease Pending	5,000 SF	38	People's United Bank	6,000 SF
									39	Verizon Wireless	2,500 SF

Mayfair Shopping Center

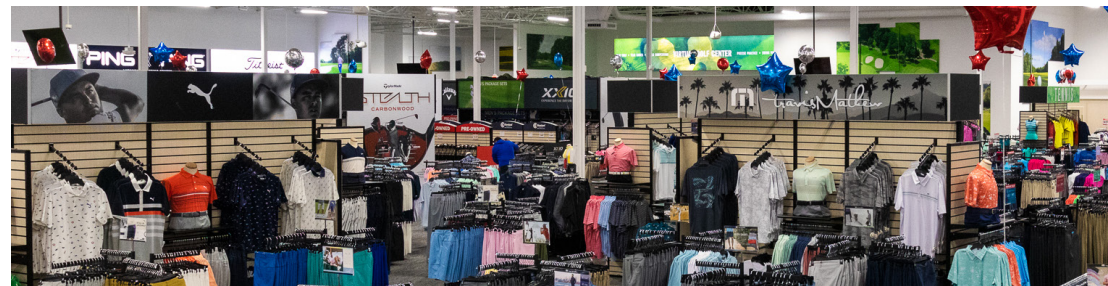
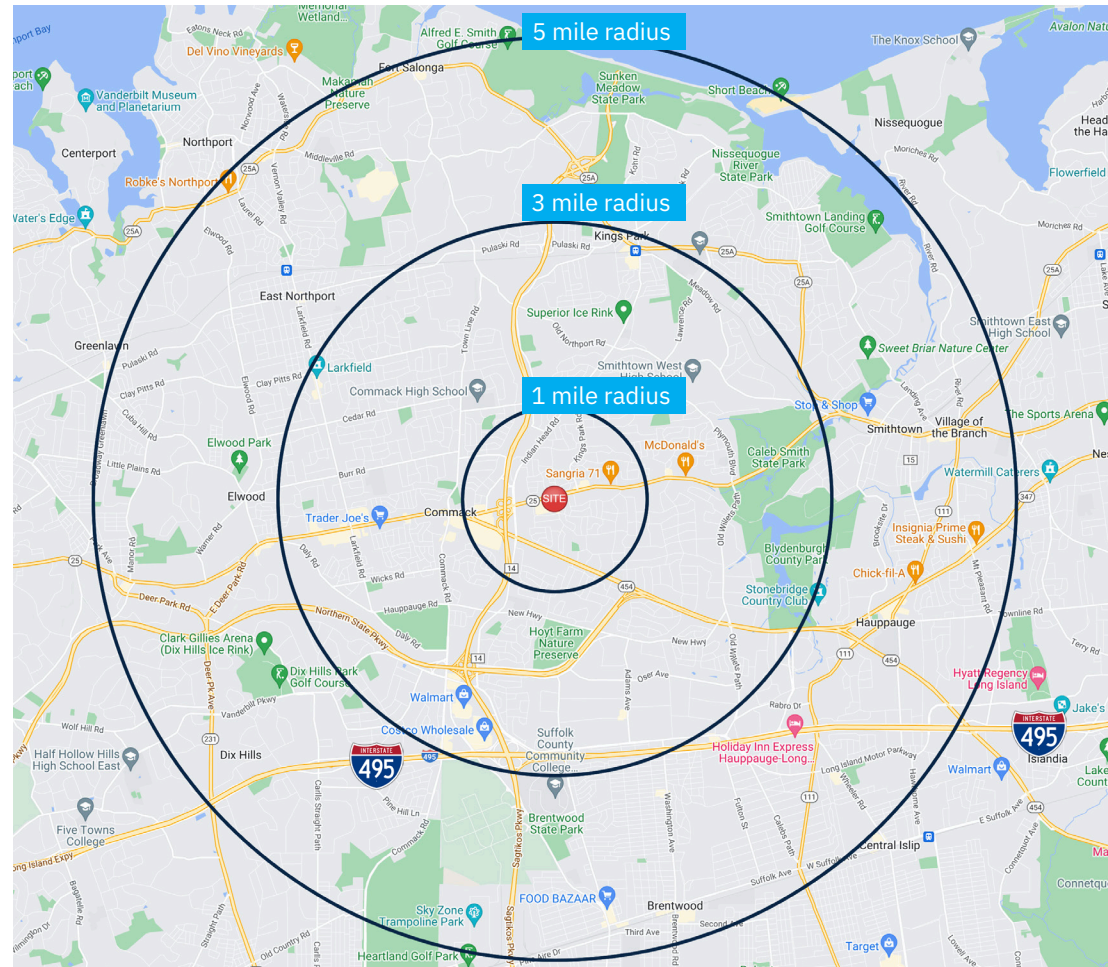
10-2020 JERICHO TURNPIKE | COMMACK, NY 11725

LEVIN
MANAGEMENT

DEMOGRAPHICS

2010-2020 Census, 2023 Estimates	1 mile radius	3 mile radius	5 mile radius
Population	11,240	69,478	202,137
Households	3,864	23,141	63,205
Average Household Income	\$166,484	\$175,647	\$170,000
Projected Average Household Income (2028)	\$217,529	\$231,064	\$224,199
Median Household Income	\$139,996	\$133,195	\$128,460
Total Businesses	598	4,436	10,200
Total Employees	5,948	64,581	124,788
Daytime Population	6,105	65,745	128,083
Total Annual Household Expenditure	\$391.63 M	\$2.47 B	\$6.6 B
HH Income \$200K or more	30.1%	28.4%	26.1%
College Degree + (Bachelor Degree or Higher)	50.3%	50.1%	43.5%

Source: sitesusa.com



Mayfair Shopping Center

10-2020 JERICHO TURNPIKE | COMMACK, NY 11725

LEVIN
MANAGEMENT

CLOSE-UP AERIAL

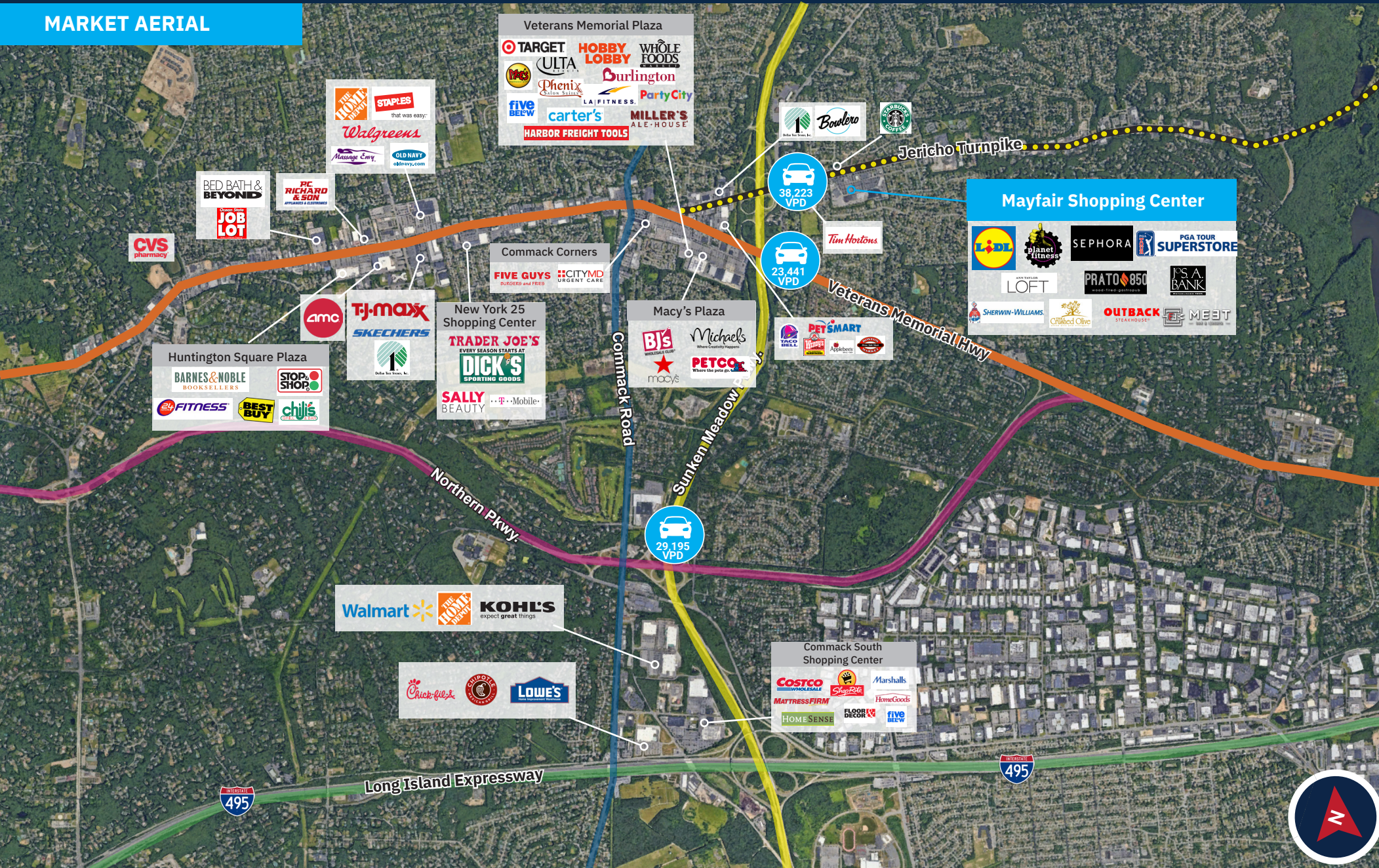


Mayfair Shopping Center

10-2020 JERICHO TURNPIKE | COMMACK, NY 11725

LEVIN
MANAGEMENT

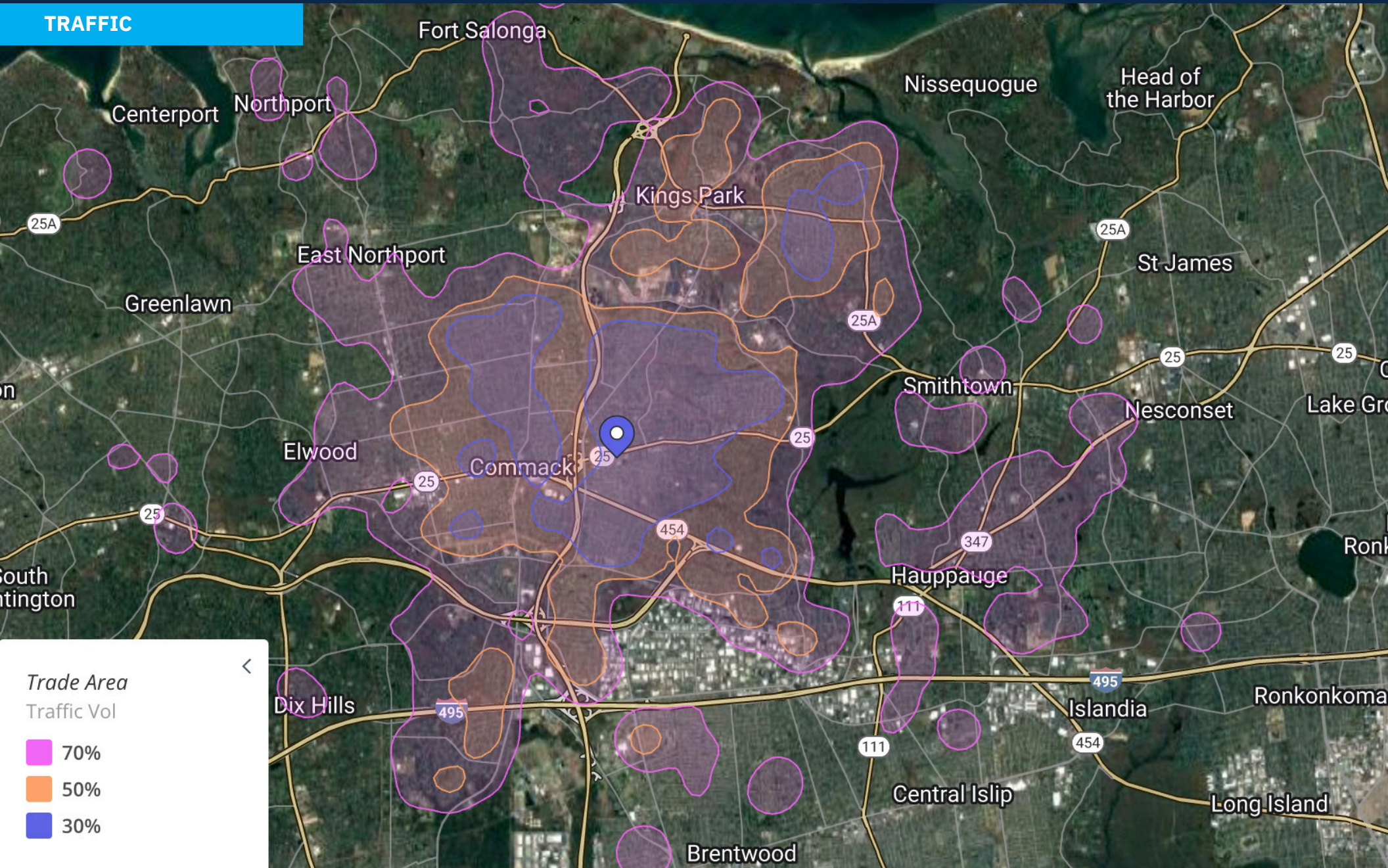
MARKET AERIAL



Mayfair Shopping Center

10-2020 JERICHO TURNPIKE | COMMACK, NY 11725

TRAFFIC



CONTACT EXCLUSIVE AGENT

E.J. MOAWAD

Senior Leasing Representative

t. 908.226.5266 m. 201.705.3721

emoawad@levinmgt.com



Main Office

975 US Highway 22
North Plainfield, NJ 07060
800.488.0768
levinmgt.com | 70 YEARS