

Mayfair Shopping Center

10-2020 JERICHO TURNPIKE | COMMACK, NY 11725

LEVIN
MANAGEMENT



2.1M visits annually
+19+% YoY increase
5.73 visit frequency
70 min avg. duration

*Property Data by Placer.ai



Available Spaces

1,360 SF; 2,430 SF; 2,971 SF
6,762 SF - portion of space 28 (remaining space leased to Sephora)
12,800 SF - former Rite Aid
21,000 SF - portion of space 15 (remaining space leased to PGA TOUR Superstore)

Property Highlights

- 221,612 SF retail center with 2.1 million annual visits* .
- Anchored by top-ranked grocer Lidl and PGA TOUR Superstore.
- Leasing and improving the store lineup has resulted in the center's monthly traffic to increase by 19+% YoY
- More retailers added: Sephora (recently opened), Champions Martial Arts (recently opened) and Mimi's Coffee & Bubble Tea coming soon!
- A successful tenant mix of national retailers and restaurants.
- Located in upscale Suffolk county; typical visitor income of \$200K*.
- Situated on Jericho Turnpike, proximate to Sunken Meadow State Parkway.

Retailers



Prato 850, Outback Steakhouse, Meet Izakaya Ramen Bar, Bagel Toasterie, Northwell Go Health, Gamestop, The Crushed Olive, H&R Block, Original Brooklyn Pizza, D'Ore Jewelers, Tropical Smoothie, JBBQ & Shabu Shabu and more.

Average Daily Traffic

38,223 Jericho Turnpike*
29,195 Sunken Meadow State Parkway*
33,690 Commack Road, CR 4*

Demographics

5-mile radius



202,137
POPULATION



63,205
HOUSEHOLDS



\$170,000
AVERAGE HH INCOME



128,083
DAYTIME POPULATION

Source: sitesusa.com

Mayfair Shopping Center

10-2020 JERICHO TURNPIKE | COMMACK, NY 11725

LEVIN
MANAGEMENT

PHOTO GALLERY



**PGA Tour Superstore,
Champions Martial Arts and
Sephora are now open!**

**Mimi's Coffee & Bubble Tea
coming soon!**

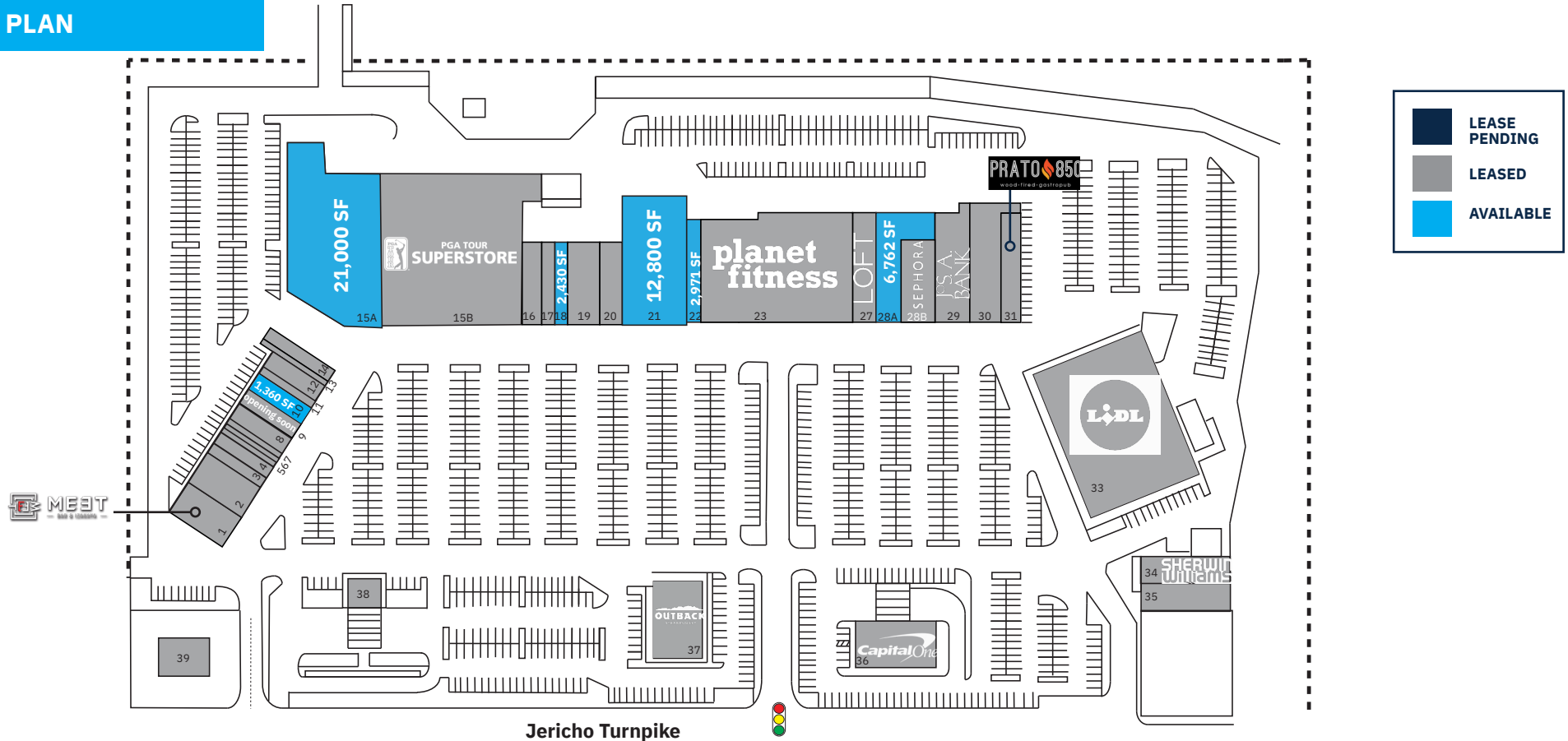


Mayfair Shopping Center

10-2020 JERICHO TURNPIKE | COMMACK, NY 11725

LEVIN
MANAGEMENT

SITE PLAN



TENANT ROSTER

| | | | | | | | | | | | |
|---|---|----------|-----|-------------------------|-----------|-----|-----------------------------|-----------|----|----------------------|-----------|
| 1 | Meet Izakaya Ramen Bar | 3,749 SF | 10 | Available | 1,360 SF | 18 | Available | 2,430 SF | 29 | Jos. A. Bank | 5,064 SF |
| 2 | Bagel Toasterie | 3,320 SF | 11 | H&R Block | 800 SF | 19 | Harry Charles Salon & Spa | 3,480 SF | 30 | JBBQ & Shabu Shabu | 6,507 SF |
| 3 | Champions Martial Arts | 1,320 SF | 12 | The Crushed Olive | 1,280 SF | 20 | Music & Arts | 2,500 SF | 31 | Prato 850 | 3,380 SF |
| 4 | Tropical Smoothie | 1,280 SF | 13 | Barber | 960 SF | 21 | Available (former Rite Aid) | 12,800 SF | 33 | Lidl | 30,808 SF |
| 5 | Queen Bee Nail Salon | 800 SF | 14 | Gamestop | 2,000 SF | 22 | Available | 2,971 SF | 34 | Sherwin Williams | 4,975 SF |
| 6 | Excel Shoe Repair | 500 SF | 15A | Available | 21,000 SF | 23 | Planet Fitness | 19,865 SF | 35 | Mayfair Liquors | 3,894 SF |
| 7 | Cleaners | 890 SF | 15B | PGA Tour Superstore | 39,225 SF | 27 | Loft | 5,700 SF | 36 | Capital One | 5,500 SF |
| 8 | D'Ore Jewelers | 1,200 SF | 16 | Northwell Go Health | 2,500 SF | 28A | Available | 6,762 SF | 37 | Outback Steakhouse | 6,192 SF |
| 9 | Mimi's Coffee & Bubble Tea <i>Opening Soon!</i> | 1,200 SF | 17 | Original Brooklyn Pizza | 1,400 SF | 28B | Sephora | 5,000 SF | 38 | People's United Bank | 6,000 SF |
| | | | | | | | | | 39 | Verizon Wireless | 2,500 SF |

Mayfair Shopping Center

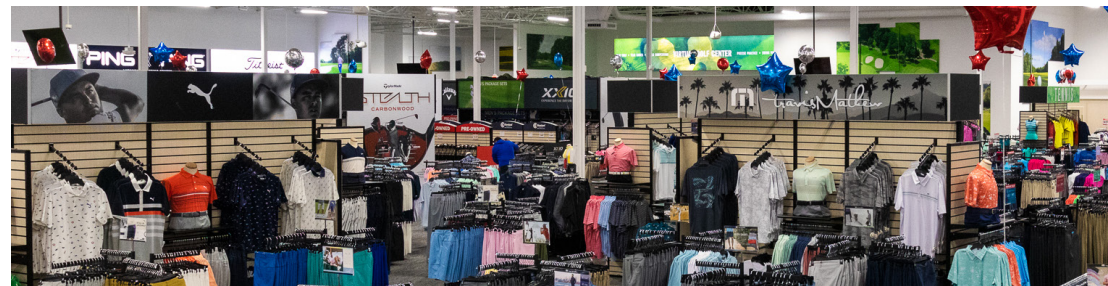
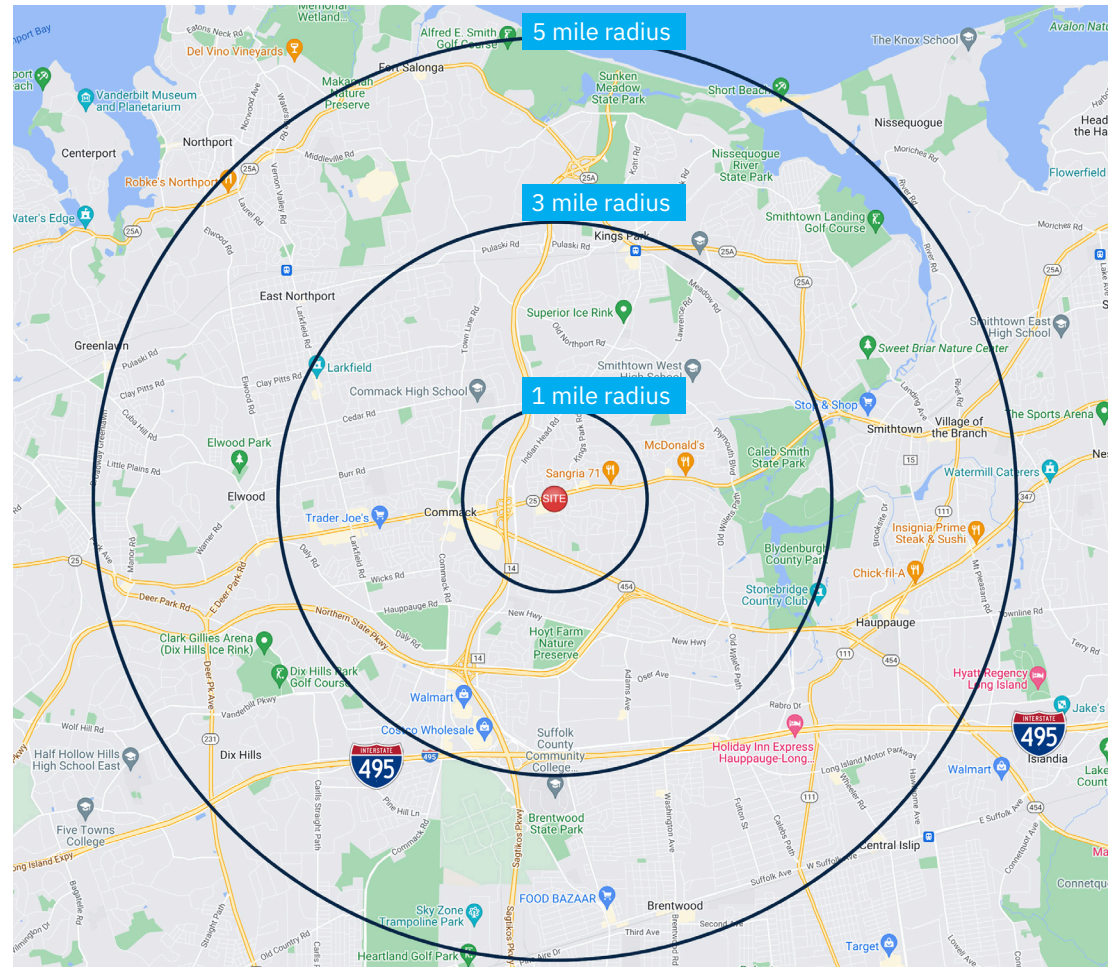
10-2020 JERICHO TURNPIKE | COMMACK, NY 11725

LEVIN
MANAGEMENT

DEMOGRAPHICS

| 2010-2020 Census, 2023 Estimates | 1 mile radius | 3 mile radius | 5 mile radius |
|--|---------------|---------------|---------------|
| Population | 11,240 | 69,478 | 202,137 |
| Households | 3,864 | 23,141 | 63,205 |
| Average Household Income | \$166,484 | \$175,647 | \$170,000 |
| Projected Average Household Income (2028) | \$217,529 | \$231,064 | \$224,199 |
| Median Household Income | \$139,996 | \$133,195 | \$128,460 |
| Total Businesses | 598 | 4,436 | 10,200 |
| Total Employees | 5,948 | 64,581 | 124,788 |
| Daytime Population | 6,105 | 65,745 | 128,083 |
| Total Annual Household Expenditure | \$391.63 M | \$2.47 B | \$6.6 B |
| HH Income \$200K or more | 30.1% | 28.4% | 26.1% |
| College Degree + (Bachelor Degree or Higher) | 50.3% | 50.1% | 43.5% |

Source: sitesusa.com



Mayfair Shopping Center

10-2020 JERICHO TURNPIKE | COMMACK, NY 11725

LEVIN
MANAGEMENT

CLOSE-UP AERIAL

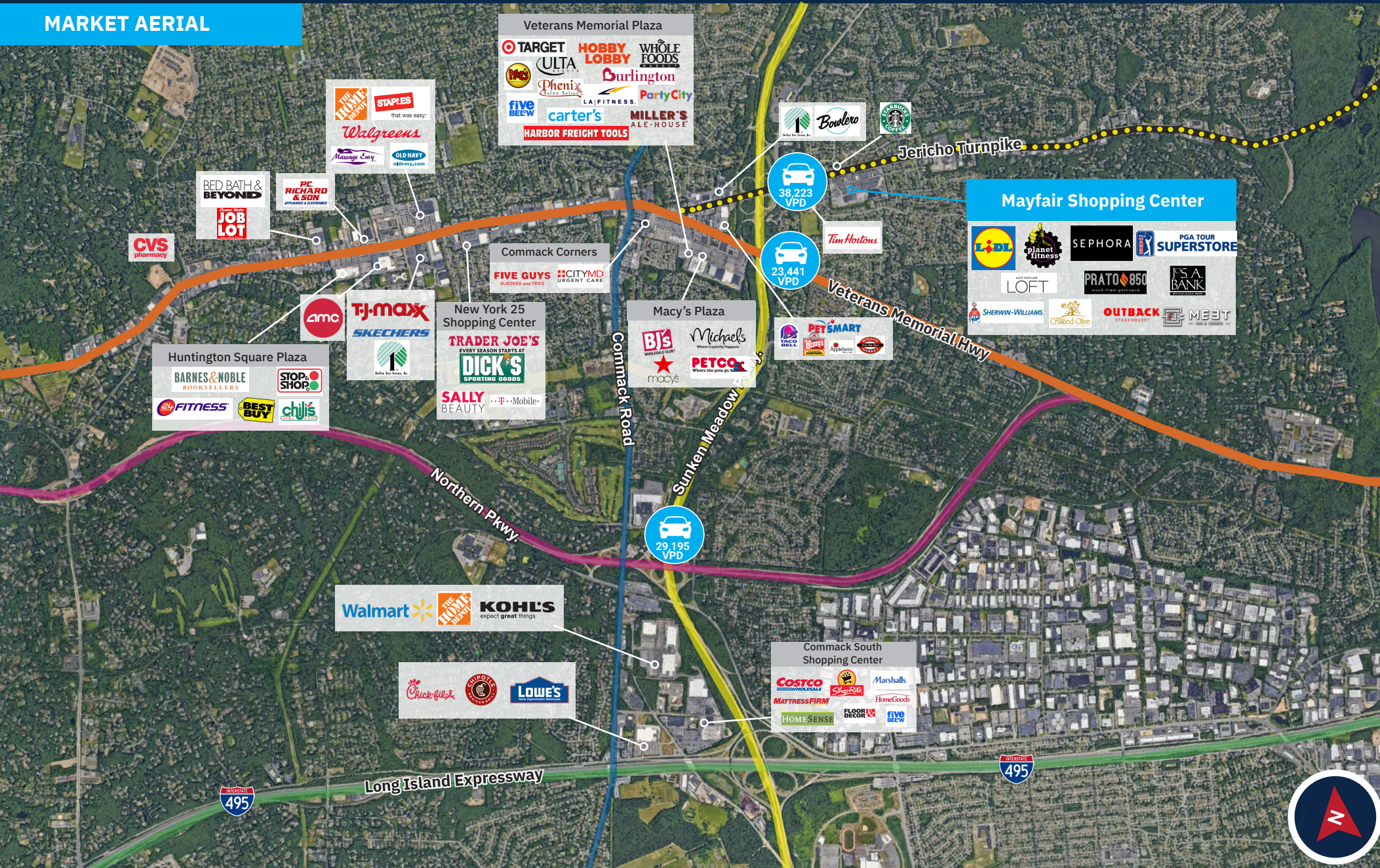


Mayfair Shopping Center

10-2020 JERICHO TURNPIKE | COMMACK, NY 11725

LEVIN
MANAGEMENT

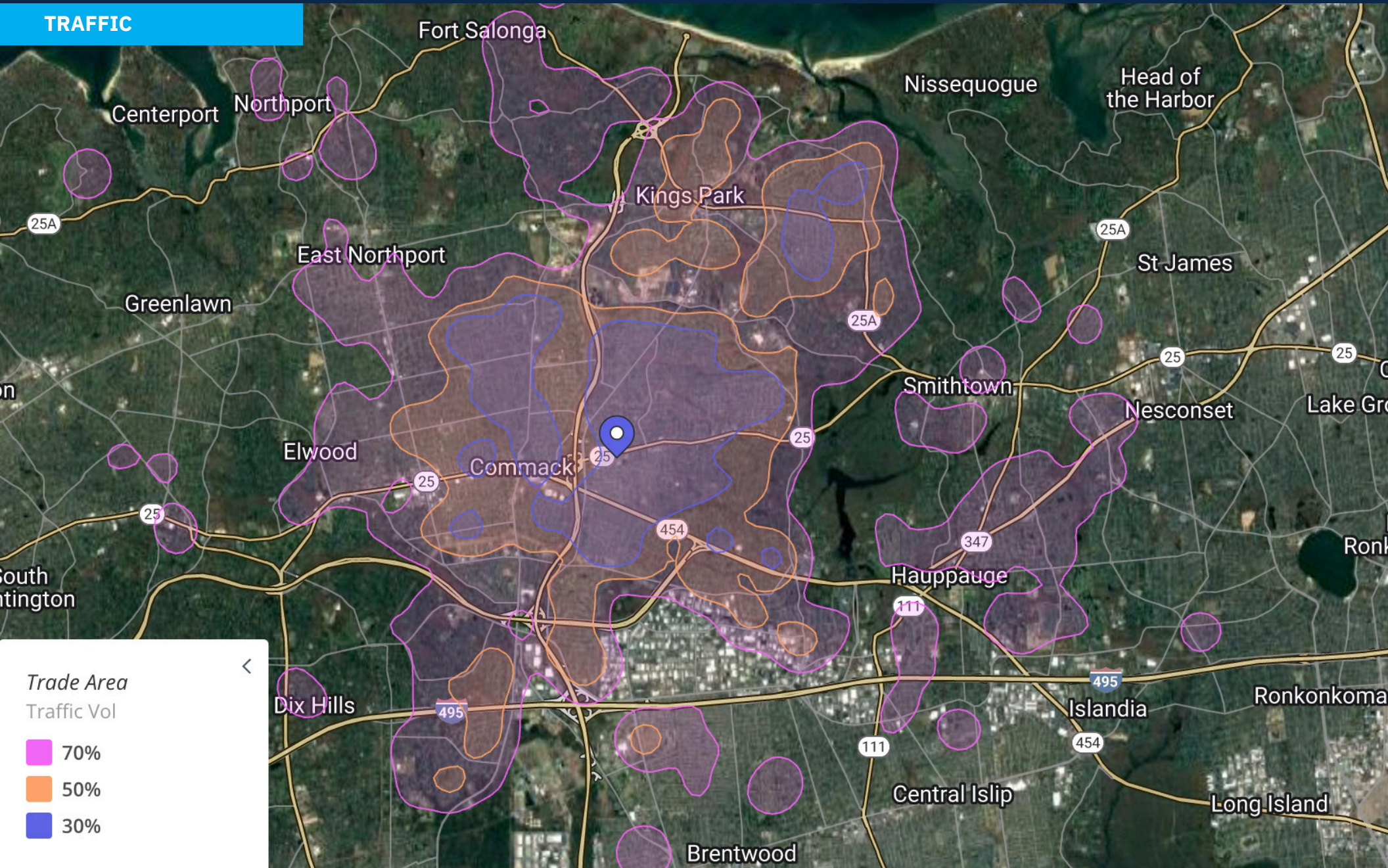
MARKET AERIAL



Mayfair Shopping Center

10-2020 JERICHO TURNPIKE | COMMACK, NY 11725

TRAFFIC



CONTACT EXCLUSIVE AGENT

E.J. MOAWAD

Senior Leasing Representative

t. 908.226.5266 m. 201.705.3721

emoawad@levinmgt.com



Main Office

975 US Highway 22
North Plainfield, NJ 07060
800.488.0768
levinmgt.com | 70 YEARS